

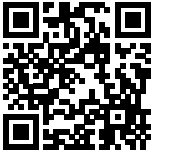
Explore Valentine & Cherry County

Free
Travel
Guide



THIS IS AS *Pure* AS GOLF GETS.

Complete with two championship 18-hole golf courses, a 10-hole short course, comfortably appointed rooms on location, and a Nebraska-inspired dining experience, The Prairie Club is a world-class destination, just a jaunt down Highway 97.



BOOK NOW



THE PRAIRIE CLUB

SEASON 2023 MAY 11 - OCT 8

THEPRAIRIECLUB.COM | (888) 402-1101



Passport Stop #28

Super 8 by Wyndham



Newly Remodeled!

Stay with Us!



Find Us



FREE
wifi internet
parking
breakfast
pool & hot tub

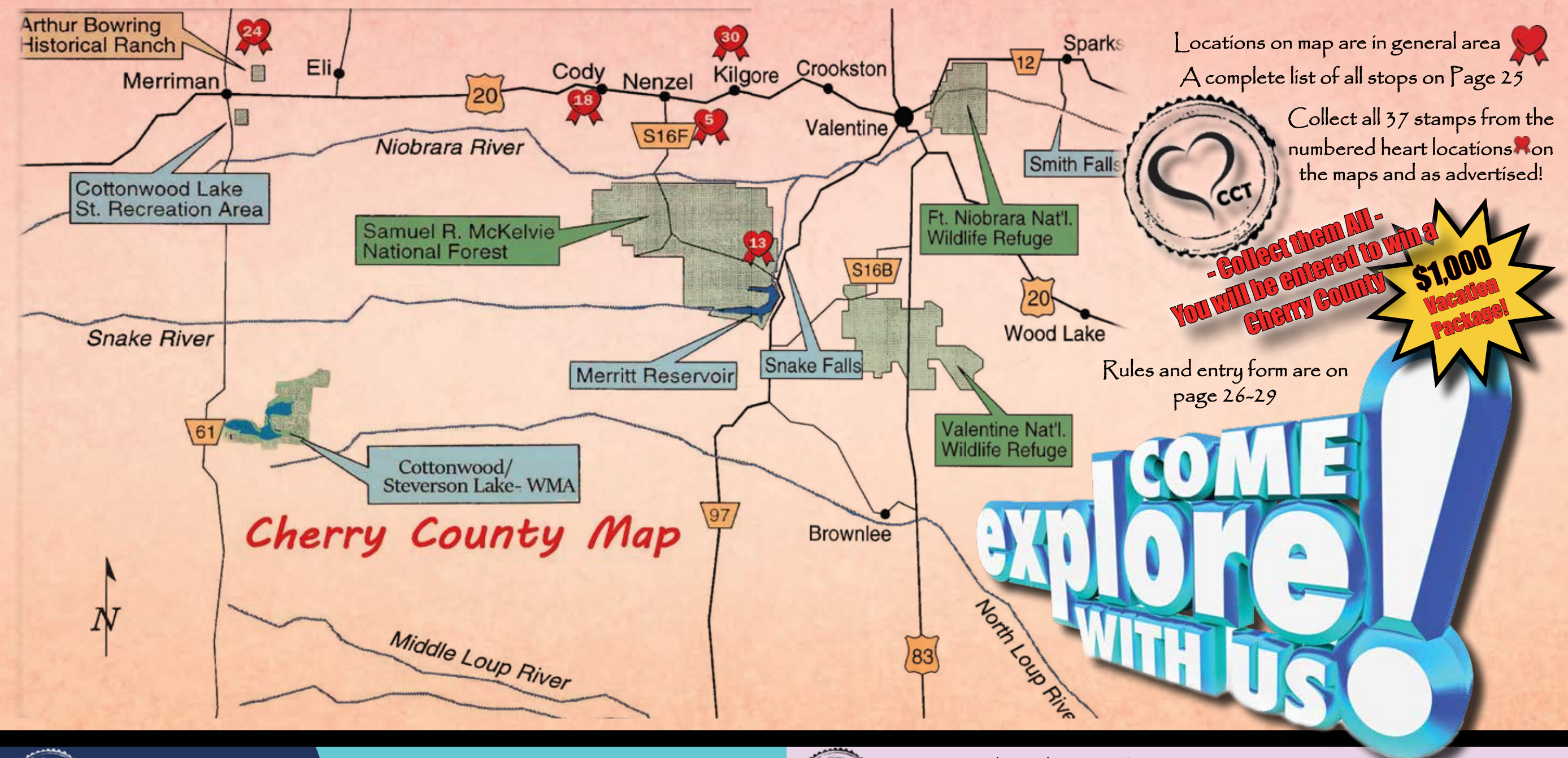


223 East Hwy 20 Valentine, NE 402-376-1250

Collect Stamps!
Win Prizes!
HAVE AN ADVENTURE!
See All Details
on Page 26!

On the Cover...	34, 22
Attractions.....	8, 14, 20 34-37, 40-49, 52
Maps.....	6, 16, 50
Passport Stops.....	25
Outfitters.....	19, 38, 39
Museums.....	54
Souvenirs.....	51
Close to town. .	20, 42-47
Calender.....	44
Directory.....	30-31
Passport Info.....	26-29
Entry Form.....	29





Passport Stop #22

 **BOLO BEER**

Brewery & Taproom

Fresh. Local. Western.

Open Wednesday to Saturday
4pm to 10pm (ish)
420 East 1st Street, Valentine, Neb.
www.BoloBeer.com



Passport Stop #23

 **Janine's Flower Exchange**

& Emporium

Full Service

Coffee
Flowers
& Gifts

Flower Shop & Espresso Bar

- Everyday
- Celebrations
- Sympathy
- Weddings
- Holidays
- Lattes
- Cappuccinos
- Frappes
- Fruit Smoothies
- Italian Sodas

Island Bamboo/PAKKA - Dizzy Pig - Crow Canyon
Fiestaware - Jelly Cat - Handcrafted jewelry made locally

www.janinesflower.com



Hours: 8-5 M-F / 8-Noon Sat



262 N. Main Street
Valentine, NE 1-800-769-2257



Merritt Reservoir

- Merritt Reservoir located in a picturesque valley of the Snake River 26 miles southwest of Valentine
- It has Nebraska's best fishing, boating and camping areas and is open year round
- Walleye, crappie and white bass have long been the favorites, but there are numerous other species - catfish, perch, bluegill, northern pike, large & small mouth bass, and even monster muske
- Merritt Trading Post is located at the North end of the main lake at the dam. Stop in for all fishing and hunting information, bait, ice, refreshments, fuel and anything else you may need or have forgotten.
- They also have several options for lodging and small boat and equipment rentals
- The area also has become recognized as having some of the darkest night skies in the region and is a perfect for star gazing. Merritt Reservoir has recently been named as an International Dark Sky Park.
- The Nebraska Star Party calls Merritt home for it's annual star party each summer. You will find that much of Cherry County is perfect for star gazing, but there is something to be said for witnessing the milky way from atop the Snake River Campground area, in the still of a moonless night!



Passport Stop #12

SpeedeeMart

Located at the Stoplight
HWY 83 & HWY 20

Next to McDonalds



**Your ONE Stop
Travel Shop!**



- Fuel
- Snacks
- Drinks
- Souvenirs
- Beer
- Liquor
- Showers



Passport Stop #13

Merritt Trading Post

**Cabins
Convenience Store
Bait, Tackle, Groceries
Beer/Beverages, Ice
Marine & Camping Supplies**

Merritt's Calling...

www.MerrittTradingPost.com

[Facebook.com/MTPResort](https://www.facebook.com/MTPResort)
[Instagram.com/MerrittTradingPost](https://www.instagram.com/MerrittTradingPost)
[Twitter.com/MerrittTPost](https://www.twitter.com/MerrittTPost)



photo courtesy of Stacy Bauer

402-376-3437

88337 State Hwy 97, Valentine 69201

25 Minutes S. of Valentine, on 97



MERRITT RESERVOIR HAS HOSTED THE ANNUAL NEBRASKA STAR PARTY EACH SUMMER FOR 30 YEARS, WHEN PROFESSIONAL AND AMATEUR ASTRONOMERS CONVERGE TO TAKE ADVANTAGE OF A SKY FREE OF LIGHT POLLUTION.

MERRITT IS THE FIRST NEBRASKA SITE CERTIFIED BY THE INTERNATIONAL DARK-SKY ASSOCIATION. THE IDA IS THE RECOGNIZED AUTHORITY ON LIGHT POLLUTION AND IS THE LEADING ORGANIZATION COMBATING LIGHT POLLUTION WORLDWIDE.



"THIS IS AN EXCITING FIRST FOR OUR STATE," SAID EXECUTIVE DIRECTOR OF NEBRASKA TOURISM JOHN RICKS, "THE DARK SKY PARK WILL ATTRACT PEOPLE TO EXPERIENCE THE AWE AND SPLENDOR OF OUR NIGHT SKIES, ADDING YET ANOTHER EXCELLENT, UNIQUE EXPERIENCE TO VISITING NEBRASKA."

NEBRASKA GAME AND PARKS COMMISSION DIRECTOR TIM MCCOY ADDED, "WE'RE THRILLED AND HONORED TO HAVE MERRITT RESERVOIR BE GIVEN THIS PRESTIGIOUS DISTINCTION. IT'S ANOTHER GREAT REASON TO VISIT THIS WELL-KNOWN PARK."

THE IDA'S INTERNATIONAL DARK SKY PLACES PROGRAM WAS FOUNDED IN 2001 TO ENCOURAGE COMMUNITIES, PARKS AND PROTECTED AREAS AROUND THE WORLD TO PRESERVE AND PROTECT DARK SITES THROUGH RESPONSIBLE LIGHTING POLICIES AND PUBLIC EDUCATION. THE PROGRAM HAS FIVE TYPES OF DESIGNATIONS: INTERNATIONAL DARK SKY COMMUNITIES, INTERNATIONAL DARK SKY PARKS, INTERNATIONAL DARK SKY RESERVES, INTERNATIONAL DARK SKY SANCTUARIES AND URBAN NIGHT SKY PLACES. MERRITT RESERVOIR IS NOW ONE OF ONLY 200 IN THE ENTIRE WORLD.

INTERNATIONAL DARK SKY PARKS ARE PARKS THAT ARE PUBLICLY- OR PRIVATELY-OWNED SPACES PROTECTED FOR NATURAL CONSERVATION THAT IMPLEMENT GOOD OUTDOOR LIGHTING AND PROVIDE DARK SKY PROGRAMS FOR VISITORS.

MERRITT, A 9,000-ACRE PARK SOUTHWEST OF VALENTINE IN CHERRY COUNTY, ALREADY IS KNOWN FOR ITS EXCELLENT FISHING, BOATING AND CAMPING OPPORTUNITIES.

NEBRASKA TOURISM AND THE NEBRASKA GAME AND PARKS PARTNERED TO EARN THE INTERNATIONAL DESIGNATION. LEARN MORE ABOUT MERRITT RESERVOIR SRA AT OUTDOORNEBRASKA.GOV/MERRITRESERVOIR. A PARK ENTRY PERMIT IS REQUIRED OF EACH VEHICLE ENTERING THE PARK.

FOR MORE INFORMATION ABOUT THE IDA, VISIT DARKSKY.ORG.

Light Polution Affects Us All!



Passport Stop #35
BROKEN SPOKE
boutique

Women and Children's Clothing
Natural Makeup and Skincare
Gourmet Chocolates & Candies
Local-Nebraska Made Products

Handmade Jewelry
Fair Trade Accessories
Valentine Souvenirs
So Much More!



ShopBrokenSpoke.com

205 North Main Street
Valentine, NE 803-422-1629

Hours: 10-5:30 Monday-Friday
10-5 Saturday 1-4 Sunday

Show this ad for 10% off purchase



Graham Canoe Outfitters

Tube, Canoe, & Kayak Rentals

Car Shuttle Service

Riverfront Camping



Experience the Adventure for Yourself!

Reconnect with nature, on the Niobrara National Scenic River.
Our Knowledge + Professional Staff = The Best Experience!



Office Location: 603 C. Street, Valentine, NE

Find Us!

www.GrahamOutfitters.com 402-376-3708



[niobrarariveradventures-grahamcanoeoutfitters](https://www.facebook.com/niobrarariveradventures-grahamcanoeoutfitters)



Passport Stop #32



618 W highway 20
Valentine, NE 69201
www.SleepInTheRaine.com
402-376-2030

Awarded
Booking.com
Traveler Review Award 2022

8.1
out of 10

Free Wi-Fi
Free Parking
Free Breakfast
Pet Friendly Rooms
Conference Room



See What You've Been Missing!



THE NEBRASKA STAR PARTY

JULY 16~21, 2023

For the entirety of human history our ancestors experienced a sky brimming with stars – a night sky that inspired science, religion, philosophy, art, and literature. The natural night sky is our common and universal heritage, yet it's rapidly becoming unknown to the newest generations. Experiencing the night sky as it used to be provides us with perspective and inspiration, and leads us to reflect on our humanity and our place in the universe.

And now, Nebraska has it's own International Dark Sky Park in the Sandhills south of Valentine. Merritt Reservoir State Recreation Area has been recognized among the darkest locations under the night sky by the International Dark-Sky Association.

Join us there at the week-long Nebraska Star Party, a vacation for the entire family, with ample opportunity for recreation, exploration, and shopping by day, and the magic of the heavens by night.

Whether you're a veteran star gazer or you've never even looked through a telescope, plan to spend the week with us for an unforgettably fun, economical, and educational vacation under the stars! Check out all of the details at:

WWW.NEBRASKASTARPARTY.ORG

Snake River Falls

- Among Nebraska's most spectacular waterfalls, Snake River Falls tumbles over a 54 foot wide ledge and flows 12 miles to the Niobrara River. When the Snake River is full, it is the largest waterfall in Nebraska by volume
- The waterfall is located 23 miles southwest of Valentine on Highway 97. Only 3 miles from Merritt Reservoir
- Because access to the falls is on private property, it is not well marked. Your turn will be on the west side of the road about a 1/4 of a mile after the canal crosses the highway. Watch for a large water tank and a few trees. This will be your cue to turn.
- You can view the falls from trails that will take you on both sides of the Snake Falls Sportsman's Club building.
- Admission is only \$1.00, and there is a pay box in front of the Sportsman's Club building

Please be respectful of the property when you visit.
We are privileged to be able to have this beautiful sight open to public access, and would appreciate every effort to adhere to all posted restrictions.
Thank you



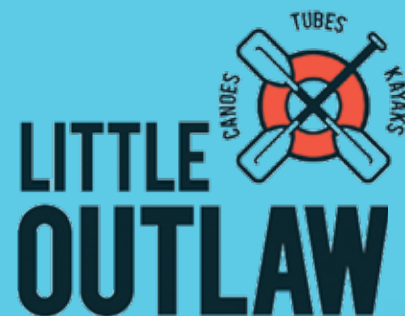
Passport Stop #14

RIVER TRIPS



Book Online!

@ OutlawCanoe.com



14

STAMP
HERE

1005 East Hwy 20
Valentine, NE 402-376-1822

CALL OR TEXT!



Passport Stop #15

Scotty's RANCHLAND FOODS

FINEST QUALITY BEEF IN TOWN!
DELI, SNACKS, ICE, BEVERAGES
LIQUOR, BEER, & WINE

Your Full Service Grocery Store !

ScottysRanchlandFoods.com



7:30 am - 8:00 pm Mon-Sat
9:00 am - 6 pm Sunday

108 West Hwy 20
Valentine, NE 402-376-3114

15

STAMP
HERE



Know Before You Go:

Outfitter Provided:

If you are a first timer or returning floater an outfitter can make your trip a seamless adventure!

- Prices are competitive. Our Outfitters will provide you with your choice of vessel (tubes, canoes, or kayaks), necessary equipment (paddles and lifejackets), and assist with your shuttle.
- Depending on the outfitter they will either arrange your shuttle from a landing, a location in town, or your campsite.
- All you will need to do is make sure you have your cooler, sunscreen, and your group ready to go!
- Plus, most Outfitters have small stores where you can pick up needed items before you head out on the river.

Self Guided:

The majority of land along the Niobrara National Scenic River is privately owned by outfitters and ranchers. However, there are options for bringing your own gear!

- Outfitters charge various fees for parking, shuttling, and accessing landings on their property.
- Fees for parking average around \$10, landing and launching varies from \$5 to \$25 depending on the outfitter. Shuttling fees vary on location, time of day/week, and other factors.
- Public Access points are available at Fort Niobrara National Wildlife Refuge (\$1 per person launch fee), Smith Falls State Park (Nebraska Game and Parks Commission Pass required), and Brewer Bridge Landing (Free).



Passport Stop #33
HOG TROUGH LLC
VALENTINE, NE

Sandhills Finest Mobile Food Truck

BBQ hamburgers to perfectly grilled steaks!

Smoked Pulled Pork & Macho Nachos - A MUST!

fairs - rodeos - weddings - branding - graduations - family reunions

Follow Hog Trough LLC's Facebook page and their many menu items at various locations across North Central Nebraska. Contact Joe or April at 402-376-5556 or email at crazy13bacon@yahoo.com to book them for your event or special occasion.

Joe's Specialty - Smoked Meats

33

STAMP HERE

Cherry County Outfitters

East Niobrara River Outfitters

Graham Canoe Outfitters.....402-376-3708
Fritz's Island Campground.....877-700-3791
Niobrara River Ranch.....402-890-1245
Sharp's Tubes and Canoes.....402-376-2506
Heartland Elk Ranch.....402-376-2553
Little Outlaw Canoe and Tube....402-376-1822
Heartland Tubes.....402-389-1964
Brewer's Canoers and Tubers.....402-376-2046
Dryland Aquatics.....402-376-3119

West Niobrara River Outfitters

Nyobrafting.....402-389-2242

A Full List of Niobrara River Outfitters
is on our Website

VisitValentine.org

Choose a Cherry County Outfitter!
Let THEM do the Heavy Lifting for You!

Passport Stop #16
NiobraraCamping.com

Book Online!

Berry Bridge Campground

RVs – Tents – Bunkhouses – Showers
Water – Electricity – Concessions

Penbrook Campground

20+ RVs sites – River Front Camping
Water – Electricity – Shower House – Toilets

www.NiobraraCamping.com

402-376-3474

off season 402-376-2503

Berry Bridge Road

Sparks River Road



16

STAMP
HERE

Get your Passport Stamp
@ 90281 Berry Bridge Road

Passport Stop #34

Huskerland Communications

UScellular™ Authorized Agent
170 S. Main St., Valentine, 402-376-3597

New and current customers—get the
most advanced models yet.

Shop our Full inventory:

- Phone Cases & Accessories
- Cell Phone Chargers
- Electronics and so much more!



iPhone

uscellular

34

STAMP
HERE



Valentine City Park, Mill Pond & State Fish Hatchery

- Valentine City Park has a rentable pavilion, picnic tables, water, sand volleyball courts and an entertainment stage
- There are restrooms and showers available (closed in the winter months)

- Primitive camping spots are available with outdoor charcoal grills and picnic tables
- Enjoy a shaded walk among the oak and ponderosa pines trees along the trout filled Minechaduza creek

- Your walk will take you by the Valentine State Fish Hatchery. Spread over 700 acres, the hatchery handles millions of fish eggs annually. In most years, lakes in Cherry County alone are stocked with some 675,000 fish. Enjoy watching the geese as they wander between the numerous ponds on site

- Just to the north is Government Canyon, a 640 acre area, offers prime wildlife habitat and activities including hiking, biking, bird watching, and hunting in specified areas



Passport Stop #21

Sharp's Outfitters

Niobrara Adventures

Book Your Float & Stay !

- Clubhouse has snacks, ice, and drinks, shower house, restrooms
- 127 campsites & 29 RV spots w/electrical hook ups along 2 miles of Niobrara riverfront!

TUBING CANOEING, KAYAKING, CAMPING

(402) 376-2506 / (402) 322-5606

www.sharpsoutfitters.com



Brand New Clubhouse !



Stamp Here

90048 Sparks River Road
5 miles South of Sparks, NE
on the Scenic Niobrara River



Passport Stop #19

CONOCO

FAST & FRIENDLY SERVICE - EVERYDAY

FUEL - CAR WASH
DRINKS - SNACKS
AG DEISEL



203 EAST HWY 20
402-376-2283

Stamp Here

FUEL UP THE CAR... & THE FAMILY

BREAKFAST - LUNCH - ALL THE EXTRAS!

Stamp Here



Passport Stop #27

Frederick Peak Golf Club
1000 Dowden St., Valentine
402-322-2754

27

STAMP
HERE



After designing one of modern golf's greatest courses at The Prairie Club, Tom Lehman and Chris Brands returned to Valentine to design a public golf course accessible to anyone.

Opened in 2017, Frederick Peak Golf Club boasts 10 of the most fun golf holes that you will ever play. The dramatic canyon landscape carved out by the Minnechaduz Creek is ideal for golf. The area's natural beauty blends perfectly into the course to create an unheralded outdoor experience.

Come visit us. Experience municipal golf at its best. Experience Valentine.



Passport Stop #36

Henderson's

People who care.



- Valentine's Finest Cut Angus Beef.
- Quick and Accessible Snacks & Beverages
- Great Hot Breakfast & Lunch Options in the Deli
- Fresh Produce and Bakery Items
- Best Customer Service!



36

STAMP
HERE

Henderson's IGA

710 E. Hwy 20
Valentine, NE 402-376-1144

www.hendersonsiga.com

Open Daily 8:00 a.m. - 9:00 p.m.



Passport Stop #37

HEARTLAND ELK RANCH

Get Away From It All

Tubing - Canoeing - Kayaking

Everything you need, all in one place, for that out of the way adventure! Float the scenic Niobrara River, hike, fish, and relax. The selection of cabins will accommodate groups large or small.

Book your stay today!



Heartland Elk

Guest Ranch

90236 Sparks River Road Valentine, NE
www.HeartlandElkRanch.com

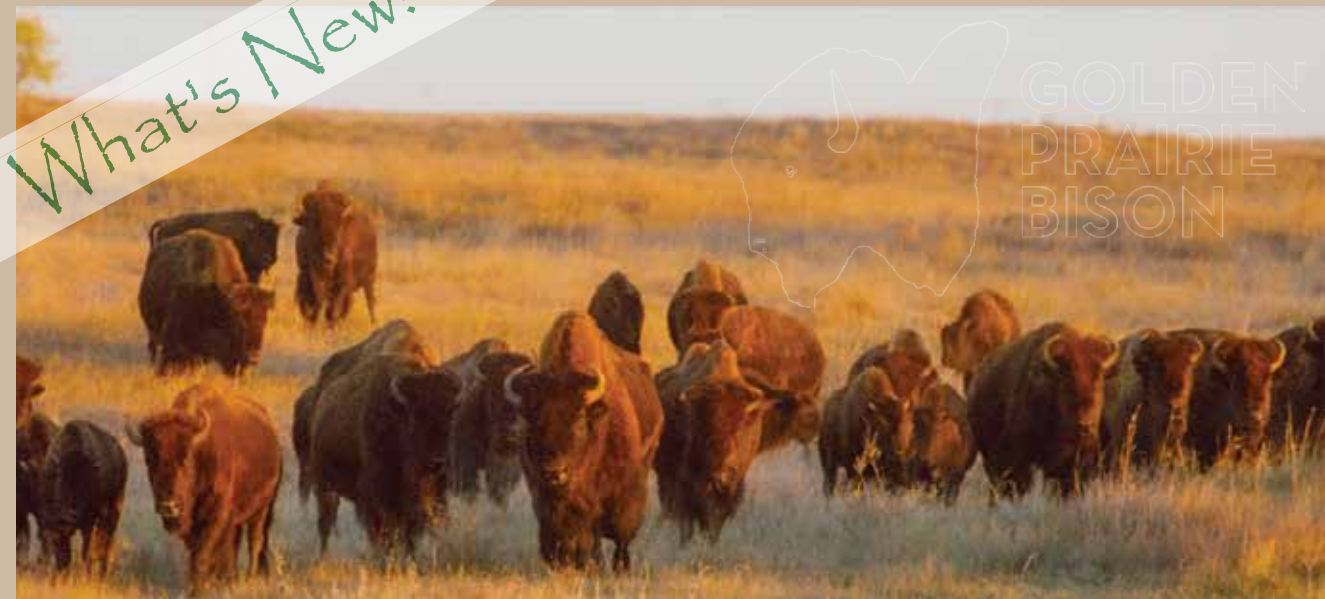
37

STAMP
HERE



GOLDEN PRAIRIE BISON

What's New!



Guided Tours

Scenic Camping

Birding Opportunities

Stargazing & Sunset Views

Personal, Friendly Service

Bison Jerky & Meat for Sale

www.GoldenPrairieBison.com (402) 606-1127 Valentine, NE

Located just outside of Valentine, Nebraska, Golden Prairie Bison is run by Carl and Vicki Simmons, with help from their family. The Simmons family has lived and worked on this land since Carl's grandmother homesteaded in the area in 1914.

Carl introduced bison to the ranch in the mid-1990s because he wanted to try his hand at something new. Since then, they have been in awe of these majestic animals and how efficiently and sustainably they live on the land. The Simmons love working on the Great Plains and hope they can share a little bit of this unique and incredibly important place with you.

★ VALENTINE

NEBRASKA



- #1 - Valentine Visitor Center
- #2 - Trade Winds Motel
- #3 - Outback Screenprinting & Embroidery
- #4 - Niobrara National Scenic River
- #5 - Niobrara Valley Vineyards
- #6 - Brewers Canoers
- #7 - Smith Falls State Park
- #8 - Humdinger Boots
- #9 - Heartland Tubes
- #10 - Country Fabric & Crafts
- #11 - Dryland Aquatics
- #12 - Speedee Mart
- #13 - Merritt Trading Post Resort
- #14 - Little Outlaw
- #15 - Scotty's Ranchland Foods
- #16 - Niobrara River Camping
- #17 - Old Mill Bulk Food & Deli
- #18 - Cody Livestock Supply
- #19 - Conoco/Godfather's Pizza
- #20 - The Gun Cabinet
- #21 - Sharp's Outfitters
- #22 - Bolo Beer Co
- #23 - Janine's Flower Exchange
- #24 - Arthur Bowring Ranch State Park
- #25 - Sandhills Art & Metal Gallery
- #26 - Subway
- #27 - Frederick Peak Golf Course
- #28 - Super 8 by Wyndham
- #29 - Flowerland
- #30 - Bordertown Steakhouse
- #31 - Mid-Plains Community College
- #32 - The Rain Motel
- #33 - The Hog Trough - Mobile Food Truck
- #34 - Huskerland Comm./ US Cellular
- #35 - Broken Spoke Boutique
- #36 - Henderson's IGA
- #37 - Heartland Elk Ranch



Passport Stop #26

SUBWAY

TRY THEM
NOW

SUBWAY
SERIES
EST. 2022



1

THE PHILLY
Steak, peppers, onions, 2x provolone
cheese, mayonnaise, toasted

THE OUTLAW™

Steak, peppers, onions, 2x Pepper Jack
cheese, Baja Chipotle, toasted

2



3

THE MONSTER™
Steak, peppers, onions, 2x Monterey Cheddar
cheese, bacon, Peppercorn Ranch, toasted

SUPREME MEATS

Pepperoni, salami, capicola, ham, provolone
cheese, lettuce, tomatoes, onions, banana
peppers, MVP Parmesan Vinaigrette™

4



5

BELLA MOZZA
Capicola, ham, BelGioioso® fresh mozzarella,
spinach, tomatoes, onions, banana peppers,
MVP Parmesan Vinaigrette™



6

THE BOSS
Pepperoni, meatballs with marinara,
BelGioioso® fresh mozzarella,
Parmesan cheese, toasted

THE MEXICALI

Rotisserie-style chicken, 2x Pepper
Jack cheese, smashed avocado, lettuce,
tomatoes, onions, Baja Chipotle, toasted

7



8

THE GREAT GARLIC™
Rotisserie-style chicken, provolone cheese,
bacon, lettuce, tomatoes, onions, Roasted
Garlic Aioli, toasted

THE CHAMP™

Rotisserie-style chicken, peppers,
onions, 2x Monterey Cheddar cheese,
Peppercorn Ranch, toasted

9



10

ALL-AMERICAN CLUB™
Turkey, ham, American cheese, bacon, lettuce,
tomatoes, onions, mayonnaise, toasted

SUBWAY CLUB™

Turkey, ham, roast beef, provolone
cheese, lettuce, tomatoes, onions,
mayonnaise

11



12

TURKEY CALI CLUB™
Turkey, BelGioioso® fresh mozzarella,
bacon, smashed avocado, spinach,
tomatoes, onions, mayonnaise, toasted



See our brand New Remodel!
224 South Main Street
Valentine, NE

26

STAMP
HERE

ONE CHARMING
TOWN, THREE
COMFY HOTELS



Independently owned and operated in Valentine, Nebraska by Bird Dog Hospitality.

Cherry County Passport Prizes:

10 Stamps (Any location) = Cherry County Tourism Magnet

All prizes are cumulative - Collect this prize and get more entries to win, as you get more stamps!

- a entry to win \$20.00 in Valentine Chamber Bucks - (5 winners)

15 Stamps (w/a minimum of 2 stamps from each region map - river map . county map . city map)

Cherry County Post Cards / Custom Valentine's Day Cards

Plus a chance to win one of the following:

- a entry to win a \$100.00 worth of Beef - (3 winners)
- a entry to win \$100.00 in Valentine Chamber Bucks - (3 winners)

All Stamps = Choice of Cherry County Passport T-shirt or Tumbler Cup
(T-shirts and tumblers to only the first 50 participants to complete all stops)

Plus All who complete all stops get an entry in the Grand Prize Drawing:

1 lucky winner will walk away with:

Cherry County Vacation Package of your choice!

Worth up to \$1,000.00 Value - Includes lodging, dining, & activities
Cherry County Tourism will help you plan a getaway with the activities of your choosing (no redeemable cash value)

A Special Prize to anyone completing 37 stops 2 years in a row!

Cherry County Passport Instructions:

Participation is from April 15th - October 15th to collect all stamps and selfies!

Entry forms must be sent in / postmarked by November 15th, 2023 to be eligible for prizes

- No purchase necessary.
- One prize entry per person.
- No age limit to participate.
(must be 18 years of age to book hotel package)
- See page 48 for "selfie" instructions
- Collect stamps and mark "selfies"
- Upload selfies with #cherrycountypassport
- Fill out entry form on page 29
- Detach entry form / fold / stamp / mail

Each location has their own stamp to mark your passport. Collect 2 stamps from each location.

One to keep with your Explore Valentine Magazine and one for your entry form on page 47.

Make sure you have each Passport Stop stamps their ad and the entry form.

Keep your booklet and mail in only the entry form. Don't forget to mark upload your selfies!

- All winners of prize drawings will be notified in December of 2023
- Please allow until January 30th 2024 for all prizes to be distributed.

The goal of the Cherry County Passport program is to provide a fun experience as you Explore Valentine & Cherry County! We hope that you enjoy the adventure and get a better idea of everything Cherry County has to offer. We are glad you are here!
You are half way to anywhere....and in the middle of nowhere....Perfect!



Welcome to the 3rd Annual
Cherry County Passport Program!

April 15th - October 15th

ARE YOU **DREAMING** ABOUT
A CHERRY COUNTY ADVENTURE!

TAKE THIS PASSPORT AS YOUR GUIDE
ACROSS THE COUNTY!

WE HOPE THAT WITH EACH TURN OF THE PAGE OF
YOUR EXPLORE VALENTINE MAGAZINE,
YOU FIND ANOTHER REASON
TO COME VISIT CHERRY COUNTY!

Cherry County is HUGE, so you had better make a plan!

Pick your dates. Map out your itinerary. Book your outfitters and lodging.

Pack your bags! Then grab your Cherry County passport and get in the car!

Stop in to the Valentine Visitor Center!



Valentine
Cherry County Tourism
VisitValentine.org

239 S. Main Street in Valentine

Get your first official
stamp from us!



PLEASE ONLY STAMP ONE BOOK PER PERSON / All individuals are responsible for obtaining their OWN STAMPS !!



#1
Valentine Visitor Center



#2
Trade Winds Motel



#3
Outback Screenprinting & Embroidery



#4
Niobrara National Scenic River



#5
Niobrara Valley Vineyards



#6
Brewers Canoers



#7
Smith Falls State Park



#8
Humdinger Boots



#9
Heartland Tubes



#10
Country Fabric & Crafts



#11
Dryland Aquatics



#12
Speedee Mart



#13
Merritt Trading Post



#14
Little Outlaw



#15
Scotty's Ranchland Foods



#16
Niobrara River Camping



#17
Old Mill Bulk Food & Deli



#18
Cody Livestock Supply



#19
Conoco Godfather's Pizza



#20
The Gun Cabinet



#21
Sharp's Outfitters



#22
Bolo Beer Co



#23
Janine's Flower Exchange



#24
Arthur Bowring Ranch



#25
Sandhills Art & Metal Gallery



#26
Subway



#27
Frederick Peak Golf Course



#28
Super 8 by Wyndham



#29
Flowerland



#30
Bordertown Steakhouse & Saloon



#31
Mid-Plains Community College



#32
The Raine Motel



#33
The Hog Trough Mobile Food Truck



#34
Huskerland Comm. US Cellular



#35
Broken Spoke Boutique



#36
Henderson's IGA



#37
Heartland Elk Ranch

Selfies!
#cherrycountypassport



Is the attraction or business not open today? Bummer!
Don't Worry - Just take a selfie holding your Explore Valentine & Cherry County Passport, mark the stamp spot with the word "Selfie" and upload your pics to Facebook or Instagram with the hashtag: #cherrycountypassport.

Be sure to fill out all your info on the other side of this sheet and get it sent in!

See our website for any updates, changes, or more chances to enter!
Let the Adventure Begin!



Return Address:

Postage
Required

CHERRY COUNTY TOURISM
P.O. Box 687
VALENTINE, NE 69201



Passport Information Form:

Name: _____

Address: _____

Phone #: _____

of completed Passport Stops: ____ # of selfies: ____

Did you post any selfies w/ ?

Facebook/Instagram name: _____

Be sure to mark them "Selfie!" on the stamp page.

Did you make it to all the Stops? Congratulations!!

Choose 1 (X) : Tumbler cup _____ or T- Shirt _____

T-shirt size (X): S ____ M ____ L ____ XL ____ other ____ (specify) _____

If your name is drawn for the Grand Prize Package

Activity of Choice? : _____ (golf, hunting, fishing, camping, other)

Comments:

Thank you For Visiting!

Email Address: _____

(Email will be used for contest prize and entry correspondence only)

Valentine

Restaurant/Cafe /Lounge

Peppermill Restaurant
& EKV Lounge.....(402)376-2800
Old Mill Bulk Food & Deli.....
and Bakery.....(402)376-8034
Bunkhouse Saloon.(402)376-1609
Coachlight Cafe.....(402)376-3145
Sale Barn Cafe / sale days only.....
Hoebe's Smoke N' Meats
(serving @ Bolo Beer Co).... Fridays

Fast Food

McDonald's.....(402)376-1714
Subway.....(402)376-2112
Pizza Hut.....(402)376-3303

Deli/Grocery

Old Mill Bulk Food & Deli.....
and Bakery.....(402)376-8034
Henderson's IGA...(402)376-1144
Scotty's Ranchland..(402)376-3114

Ice Cream

Sandhills Art & Metal Gallery.....
& Ice Cream Shop (402)-376-1839

Dining

Coffee Shop/Gift

Janine's Emporium.(402)376-2392
Old Mill Bulk Food & Deli.....
and Bakery.....(402)376-8034

Seasonal Dining

Bulldogger's BBQ..(402)-376-2786
The Prairie Club....(402)-376-1101
Raine Restaurant.....(402)376-2030

Convenience Store

Conoco-Godfather's.(402)376-2283
Casey's Pizza.....(402)376-2818
Sinclair.....(402)376-1302

Brewery/Bar/Pub

Bolo Beer Co.....
Corner Pub.....(402)376-1297
Vets Club.....(402)376-3603
Bunkhouse Saloon.(402)376-1609
Skylight Bar.....
Peppermill Resaurant &
EKV Lounge(402)376-2800

Kilgore

Bordertown Steakhouse
& Saloon (402)966-3881

Nenzel

Niobrara Valley Vineyards
Friday night pizza (seasonal)
Prime Rib (4th Sunday - Seasonal)
(402)823-4131

Cody

Cody's Husker Hub
(402)-823-4066
Circle C Market
(student run grocery store)
(402)-823-4099

Woodlake

Ma's Cafe (402)-967-3027

links to all listed establishments @
www.VisitValentine.com
"Eat & Drink"

Lodging

Hotel/Motels

Phone

Comfort Inn.....	(402)376-3300	50
Harmony Inn & Suites.....	(402)376-3131	72
Niobrara Lodge.....	(402)376-3000	62
Raine Motel.....	(402)376-2030	31
Super 8 Motel.....	(402)376-1250	59
Tradewinds Motel.....	(402)376-1600	32

of rooms
of Suites
Conf. Rooms
Restaurant
Indoor Pool
Pet Friendly
Fitness Room
Laundry

Resorts & Hunting

Cottonwood House	(402)376-1109	1 Cabin
Heartland Elk Ranch.....	(402)376-2553	5 Cabins
Lord Ranch Resort.....	(402)376-5984	5 Cabins
Merritt Trading Post.....	(402)376-3437	15 Cabins
Niobrara River Ranch.....	(402)890-1245	7 Cabins
Niobrara Riverview Retreat.....	(402)322-0640	Lg Bunkhouse
Rock Creek Hunting.....	(605)378-1538	1 Cabin
Sandhills Double RR Guest Ranch..	(308)546-2314	2 Cabins

airbnb options online - Valentine, Cody, Crookston, Woodlake

Camping



Niobrara River Campgrounds

Berry Bridge Camp.....	(402)376-3474	8	5	18	.	.	.	f/p	.
Dryland Aquatics.....	(800)337-3119	.	.	25	.	.	.	f/p	.
Fritz's Island Campground...	(402)432-2568	.	.	60	.	.	.	pp	.
Prairie River Outfitters & Sunny Brook Camp.....	(402)376-1887
Penbrook Campground.....	(402)376-3474	.	.	60	.	.	.	pp	.
Sharp's Outfitters.....	(402)376-2506	.	.	140	.	.	.	f/p	.
Smith Falls State Park.....	Book online.....	.	.	40	.	.	.	f/p	.

Valentine Area Campgrounds

Fishberry Campground.....	(866)376-1662	.	.	10
Wacky West	(402)376-1771	.	.	10
City Park.....	(402)-376-2323	.	.	40
Cherry Co. Fairgrounds.....	
Golden Prairie Bison.....	www.hipcamp.com

Surrounding Area Campgrounds

Merritt Reservoir.....	(402)471-1414	.	.	140
Merritt Trading Post.....	(402) -376-3437	.	.	15
Steer Creek Campground - south of Nenzel @ McKelvie Nat. Forest.....	(308)533-2257	23	.	23	.	.	.	p	.
Big Alkali Fish Camp.....	

Cody Area.....	City Park.....	pp	.
Merriman Area.....	Cottonwood Lake.....	.	.	30	.	.	.	p	.
Woodlake Area.....	City Park.....

key - f-(flush toilet) p-(pit toilet) f/p-(both) pp-(porta potties)





Passport Stop #31



**MID-PLAINS
COMMUNITY COLLEGE**
TRANSFORMING LIVES THROUGH EXCEPTIONAL LEARNING OPPORTUNITIES FOR INDIVIDUAL STUDENT SUCCESS



**VALENTINE
CAMPUS**

715 East Highway 20
Carolyn Moore, Campus Administrator
402.376.8033 | mooreca@mpcc.edu

TRANSFORMING LIVES THROUGH LEARNING OPPORTUNITIES FOR INDIVIDUAL STUDENT SUCCESS

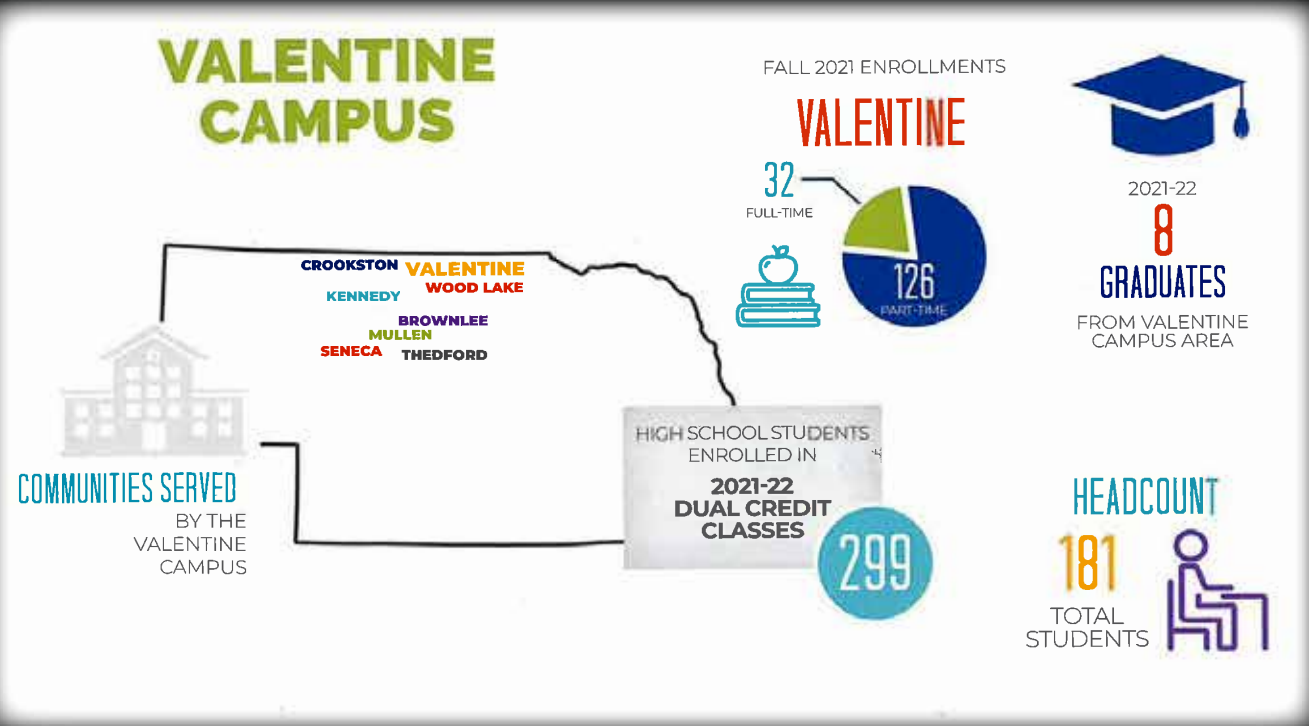


**UNCOVER
BIG FUN!**



Valentine
Cherry County Tourism
VisitValentine.org

over 50 fun things to do and a passport, too



Smith Falls & Smith Falls State Park - Niobrara National Scenic River
Hunting - Float Trips - Ice Fishing - Tubing - Tanking - Hiking - Star Gazing
Canoeing - Winery - Museums - Camping - Shopping - Brewery - Ice Cream Shop
Ft. Niobrara Wildlife Refuge & Fort Falls - Rodeo - Fishing - Water Skiing
Bird Watching - Cattle Ranches - Vinegery - Cowboy trail - Art Gallery
Samuel McKelvie National Forest - Bowring Ranch - Valentine Wildlife Refuge
Biking - Pool - Coffee Shops - Frederick Peak Golf Course - Merritt Reservoir
The Prairie Club - Snake River Falls - Brick Oven Pizzas - Kayaking -
Bull Bash - Book Store - Parks - Fish Hatchery - Demo Derby - Steak Dinners
BBQ - Indo-American Cuisine - Fly Fishing - Camp Fires - Nebraska Star Party
Scenic Drives - Cowboy Poetry & Old West Days - Parades & Festivals - Sunsets
~ Relaxation & Fun ~



***** GolferJake78 8/14/22

"Great Ten Holes! Frederick Peak is one of the best 9 (okay 10) (hole golf courses I have played. This was an impromptu stop for me and my friends on a recent golf trip. I am so thrilled we stopped because Frederick Peak is so unique that I am not sure I will play anything like it again.

The opening 4 holes are on the flat part of the course before holes 5-9 descend into, and then climb back out of the valley on the far side of the property. The 6th hole is one of the best par 5s I have played. From the back tees you play to a partially blind fairway and then can go for the green, which is a punch bowl design. Just a great hole!

Frederick Peak is a course all golf enthusiasts should play!

On The Cover

FREDERICK PEAK GOLF CLUB



Passport Stop #20

THE GUN CABINET



Buy Sell Order Trade
Shooting Supplies & Sporting Goods

402-376-1044

1007 E. Hwy 20, Valentine, NE



Find them on Facebook!

Perry Shaul. Has it All!

Hours: 8 am-6 pm M-F

8 am-5 pm Sat 1 pm-4 pm Sun

Located on the South Edge of Valentine



Passport Stop #25

Sandhills Ice Cream & Treats



Ice Cream Shop!

Local Sandhills Artist Displays:

Duane Witte, Nina Nelson.



www.NightLight.Photography

Sandhills Art & Metal Gallery

Sandhills Art & Metal Gallery



Full Photo Studio
Photo Self Kiosk
Canvas Printing
Custom Projects

NEW

Sublimation Printing
Local Souvenirs

Local Art



402-376-1839

265 North Main St.

Valentine, NE



www.VisitValentine.org Pg 35



Welcome to the Sandhills of Cherry County

- The county is named after Lt. Samuel A. Cherry
- It is the largest county in the state w/over 6,000 sq. miles
- Cherry County is larger than the state of Connecticut
- It has the largest sand dune formations in the western hemisphere

 Passport Stop #2

Trade Winds
MOTEL

1009 East Highway 20
Valentine, NE 69201
402-376-1600
Reservations Only: 888-376-1601
www.tradewindslodge.com

← Last Locally Owned Motel
#1 Rated in Area
In Room Coffee, Micro, & Fridge
Free Wireless Internet
Large Grounds w/ Security Cameras
Pet Friendly Rooms
Indoor Fish/Fowl Cleaning & Freezer

 Check us out on
Tripadvisor





 Passport Stop #3

SCREENPRINTING
OUTBACK
EMBROIDERY

We Can Customize - ANYTHING!

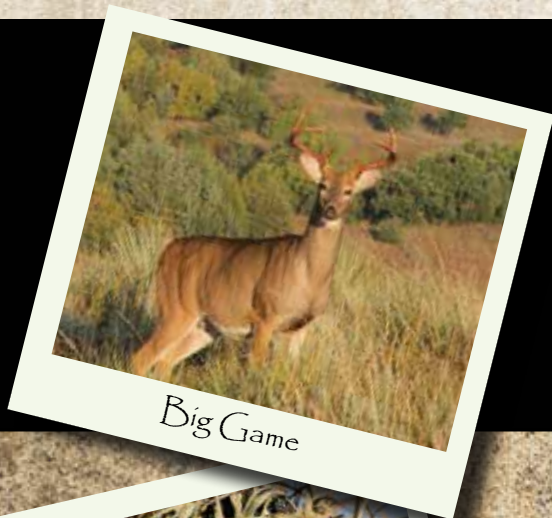
Valentine, Ne & Niobrara River
SOUVENIRS - Shirts, Hats, Cups, More
Banners & Signs of all Kinds




Choose from our great selection or bring in your own!

www.OutbackValentine.com
208 E 1st St, Valentine, NE
Hours: 8-5 M-F / 9-Noon Sat
402-376-1190





Big Game



Waterfowl



Small Game

Hunt... like a local!

Do your research. Learn Cherry County has to offer for hunting and fishing, or find hunting grounds in the region. When you stay in Cherry border and additional hunting opportunities.

about all of the public land an outfitter to have exclusive access to some of the prime County, you are only a few miles from the South Dakota Plan to stay a while - We will keep you busy!



Ponds



Lakes



Ice Fishing

Rock Creek Lodge



Book your next stay @ Rock Creek Lodge!

The Lodge is perfect for a large family stay, hunter groups, wedding groups or a family stay-cation or vacation!



"Where good friends meet for Great Hunting!"

southdakotapheasanthunting.com

Bill & Vicky Cumbow
402-376-3082
415 N. Cherry Street
Valentine Ne

TOOTH & WHISKER GUIDE SERVICE



- Merritt Reservoir
- Valentine Refuge

Tyler Brown 402-875-0524
tyler@toothandwhiskerguideservice.com



Passport Stop #29

Flower Land

Make it EXTRAORDINARY
with a special gift from
FlowerLand!

Flowers Plants Gifts Decor Holiday

Like us on Facebook

~Your Heart City Florist~



Hours 9-5 Monday-Friday
234 N. Main Street
Valentine, NE (402) 376-3082

29

STAMP
HERE



Passport Stop #30

BORDERTOWN STEAKHOUSE

{ Open 7 days a Week }

AND SALOON

The name says it all... Located 22.5 miles west of Valentine and just a few short miles from the South Dakota border, you will find the best kept secret in the Northern Sandhills. We are known for our hand cut high quality steaks and our laid-back atmosphere. Reestablished in 2016 by new owners, the Bordertown Steakhouse and Saloon is a must stop when you are traveling through Nebraska...

Hours: (note: Mountain Time)
10 am-11 pm Mon-Thurs
10 am - 2 pm Fri- Sat
11 am - 8 pm Sunday



100 Main Street
Kilgore, NE 69216
(402)966-3881

Coupon: \$5.00 off steak dinner

30

STAMP
HERE

Samuel R. McKelvie National Forest

- Samuel R. McKelvie National Forest sits on over 100,000 acres of land
- The area is more dunes, windmills and small water pockets, than actual “forest”.
- Miles of multi-use trails weave through the Sandhills - hiking, ATV/UTV, mountain biking and horseback riding
- One of the best places in the state for birdwatching, with hundreds of species spotted throughout the year
- Popular game species including white-tailed deer, antelope, and mule deer
- Steer Creek Campground is located on the west side of McKelvie and has over 20 RV sites
- Miles of hiking trails that take you into the surrounding Sandhills
- Dispersed camping throughout much of the forest.
- There are also a number of rivers and lakes in the area
- Merritt Reservoir is the most popular fishing spot in the forest
- You can also canoe and kayak on the Merritt Reservoir and on the near by National Scenic Niobrara River

Passport Stop #10 Country Fabric & Crafts

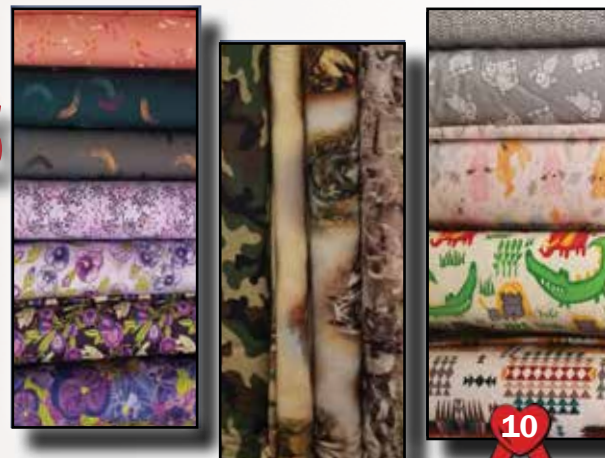
- Sew • Craft • Bead
- Quilt • Knit • Paint
- Crochet • Embroider

Featuring Baby Lock sewing, embroidery, quilting machines and sergers!

baby lock

Country Fabric & Crafts
148 North Main Street
Valentine 402-376-3544

FOR THE LOVE OF SEWING



Find them on Facebook!

email: countryfab@gmail.com

Hours: Mon-Sat 9:00 - 6:00

10

STAMP
HERE

Passport Stop #11

Canoe
Tube
Kayak
T-Shirts



Camping
Supplies
Fuel
Souvenirs

Outfitting the Niobrara for over 40 Years!

Get Back to Nature!

Everything you need - on or off the water!



**Dryland
Aquatics & Sparks Store**

41115 Sparks Rd Sparks, NE
402-376-3119 or 1-800-337-3119
www.drylandaquatics.com
drylandaquatics@gmail.com

11

STAMP
HERE

Cowboy Trail and Valentine Railroad Bridge

North America's Most Rural Bike Share! Valentine Bike Share

- Created in conjunction w/ Rails to Trails Conservancy and the Nebraska Game and Parks.
- 320 miles of trail completed along the northern edge of Nebraska.
- The Valentine Railroad bridge converted to a foot bridge 140 feet above the Niobrara
- Access the Cowboy Trail at the trail head in town or by taking a short drive and walk from the "Welcome to Valentine" sign just 4 miles outside of Valentine on Hwy 20.



- The Valentine Bike Share is Valentine's newest addition!
- The Cowboy Trail trail-head at 1st & Main Street will greet you with these adorable bikes.
- Rent 1 for a couple hours. Follow the Cowboy Trail out East of town to the railroad bridge.
- You can hang a left at green street and cruise along the new pedestrian path that will take you to the far North East end of Valentine.
- Roll downtown to do some shopping or a few blocks over to the local brewery
- Valentine Bike share is the first of it's kind being the most rural bike share in state.
- Payment can be accessed by an app on your smart phone or at the bike kiosk. Locals and frequent visitors can even get a low monthly rental rate w/ unlimited rentals.

The cowboy trail
is calling,
I must go.



Collect
moments,
not things.

**Explore the Cowboy Trail
& Beyond**

**Buy a single trip for just \$10,
which includes 2-hours of ride time!**

Check out the station at the intersection of the
Cowboy Trail & Main St to get riding- it's open
24 hours a day to explore the Cowboy Trail &
beyond!



Learn more at valentinebikeshare.org

We all
need a little
adventure.

- Magnificent, easy flowing, family friendly river
- Ranked as one of the nation's best canoeing rivers
- Designated as a National Scenic River in 1991
- Spring fed tributaries provide the river with reliable water levels year round
- Tens of thousands of annual floaters
- Want a quiet float? Try to come in the spring or late fall
- Book a trip for earlier in the week...Wednesday or Thursday, perhaps
- Great campgrounds along the river - Tent, RV, Cabins (see page 46)



Niobrara National Scenic River

- 76 miles of free flowing water
- Endless recreational activities on and off the water
- Over 200 waterfalls
- Extraordinary paleontological deposits
- Geologic formations
- Diverse animals and plants inhabit the area!
- Hybrid Aspen trees which are remnants of the Ice Age!
- 6 different ecosystems meet at the banks



Beauty - Any Season



Passport Stop #4

NIOBRARA NATIONAL SCENIC RIVER



Step inside the NPS Visitor Center to learn more about the Niobrara River Valley, it's ecosystems, habitat, and the history of the community surrounding the river!

- Enjoy an Award Winning Short Film
- See the Exhibits
- Shop their store full of One of a Kind Items
- Experience Fun and Educational Junior Ranger Activities

& Get your stamps

Visitor Center Hours:

8:30-4:30 DAILY after Memorial Day
(Mon-Fri only Labor Day - Memorial Day)

www.nps.gov/niob

214 W US Highway 20
402-376-1901



Fort. Falls



- Located five miles east of Valentine on Highway 12.
- Fort Niobrara was active from 1879 to 1906 and was used as a cavalry remount station until 1911.
- It is now home to a herd of bison.
- A self guided driving tour will allow you to see these and much more.
- A beautiful three-quarter-mile hiking trail will take you by Fort Falls, one of the area's prettier waterfalls, and wind down along the scenic river.
- Cornell Dam is located at the entrance of the refuge on the Niobrara River.
- Built around 1915, Cornell Dam and its hydroelectric plant once provided electricity to Valentine.

Ft. Niobrara National Wildlife Refuge



NPS PHOTO

- Below the dam is a public launch site for visitors who want to float the National Scenic Niobrara River.
- Stop by the visitor center on the grounds for maps. Inside are photos and a full history of the fort and a wide array of fossils and other information on the vast ecosystem of the area



Locally Handcrafted
Award Winning Wines

Regular hours are from May 1st to September 30th
Wed. - Sun. 2-7pm MT, 3-8pm CT.

402-823-4131 (off season by appointment only)

Niobrara Valley Vineyards

90256 State Spur 16F

1 1/4 mi South & 1 mi East of Nenzel



www.nvvsandhills.net

Homemade pizzas every Friday night
4-7 pm MT during our regular hours

5

STAMP
HERE



Passport Stop #6

BREWERS
CANOE · TUBE · KAYAK



Trips 7 days a week

402-376-2046

for more information

**BOOK
ONLINE!**



Office Location:

433 East Hwy 20, Valentine

BrewersCanoers.com

6

STAMP
HERE

- Smith Falls is a natural, spring fed waterfall that cascades down a rock face almost 70 ft high. Quite a unexpected sight in the middle of the sandhills.
- Step under its splendor and let the cold, crisp water take your breath away. This is a welcome, and refreshing stopping point for those floating the river.
- Smith Falls State Park's visitor center and camping area are on the other side of the Niobrara River and just few miles off of Highway 12.
- A large walking tressel bridge spans the river giving park goers easy access to Smith Falls and the Jim MacAllister Trail
- The trails offer you many more surprises and leads you through the canyon up, to open prairie before you descend along the Niobrara River edge
- You will get an up-close view of all 6 ecosystems in one hike.
- Lots of new things are happening at the park this year! Be sure to stop by and see all the new developments

Waterfall Capital of Nebraska



Passport Stop #4

SMITH FALLS STATE PARK

90159 Smith Falls Rd
Center Hours: 9-4:30 / Falls - Daylight Hours
402-376-1306



www.outdoornebraska.gov/smithfalls



Note: A Nebraska State Park Vehicle Entry Permit is required and available on site.

Basic tent camping available on north side of the river only.
May 1st to September 30th - Book online!
Picnic tables - Restrooms - Pay Showers - Reservable Shelter





Don't Forget to Snag your Swag!

Valentine / Cherry County / Nebraska Swag

Janine's Flower Exchange - post cards and other Valentine treats
 Outback Screenprinting - cups, mugs, magnets, shot glasses, hats, t-shirts, coozies, custom made to order items
 Broken Spoke Boutique - stickers, patches, post cards, key chains, cards, pins, magnets, signs, shot glasses, shirts, hats, mugs, golf balls.

Speedee Mart - postcards, t-shirts, shot glasses, spoons
 Sandhill Art & Metal Gallery - sandhills photography and local artwor, customizable items of all kinds! (Valentine, Windmills, Hearts, Sandhills)

Flower Land - Valentine and Nebraska items mugs, cutting boards & unique finds
 hats, t-shirts, water shoes, sunscreen, bug spray, waterproof bags, snacks, ice

Brewers Canoers
 Little Outlaw
 Graham Canoe Outfitters

Dryland Aquatics
 Sharps Outfitters
 Merritt Trading Post



Passport Stop #17

BAKERY DELI PIZZA BULK FOODS

OLD MILL

EST. 2014 VALENTINE, NE

706 East C Street
Valentine, NE 402-376-8034

NEW! Coffee Shop & Expanded Gift Line

Bakery
Deli
Brick Oven Pizzas
Bulk Foods

Made from Scratch
Family Business
Fresh Ingredients
Friendly Service

17

STAMP HERE

Passport Stop #18

Cody Livestock Supply

Livestock Health & Nutrition
Saddles, Tack & Equipment
Greeting Cards and Gifts
Montana Silversmith Jewelry

A little Store with So Much More!

Serving the Cody Community and Cherry County with everyday supplies as well as a wide variety of special gifts that are signature to the sandhills way of life!

M-F 8 am-5 pm (MT) / Sat 8 am-Noon (MT)
 109 West Hwy 20 - Cody, NE

402-823-4241

www.CodyLivestockSupply.com

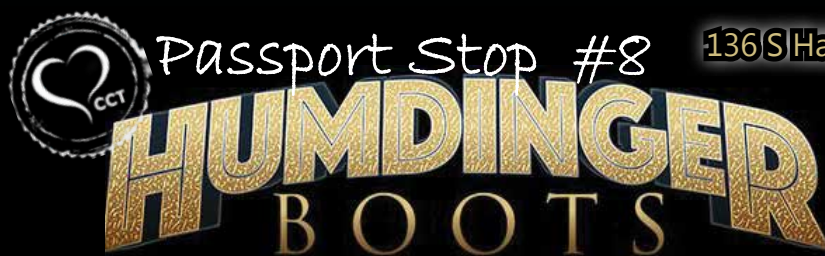
18

STAMP HERE



Valentine National Wildlife Refuge

- The native grass prairie and wetlands found here support a diversity of wildlife
- Home to over 270 species of birds
- Designated a Nebraska Important Bird Area (IBA) by the Audubon Society
- One of the Great Plains Top 50 Ecotourism Sites
- Numerous shallow lakes for fishing - perch, bluegill, bass, northern pike, bull frogs
- Open year round - Ice fishing doesn't get any better than in these crystal clear waters
- Hunting - deer, coyote, pheasant, dove, sharp tail grouse, prairie chicken, waterfowl
- Observation blinds open in the spring for prairie chicken and sharp tail grouse viewing
- No overnight camping or open fires. Daylight use only
- See website for more info, maps, all rules and regulations or call 402-376-3789



Mens - Womens - Kids Apperel

Wrangler, Roper, Stetson, Lee, Hooley, Huk, Honey Hole

More than just a
"Boot Store"



136 S Hall St, Valentine, NE 402-376-5017

Hours: Monday - 10-5
Tue, Wed, Fri, Sat - 9-5
Thursday - 9-8



www.HumdingerBoots.com

8
STAMP
HERE



Passport Stop #9

Heartland Tubes

• Best Prices! • Best Service!

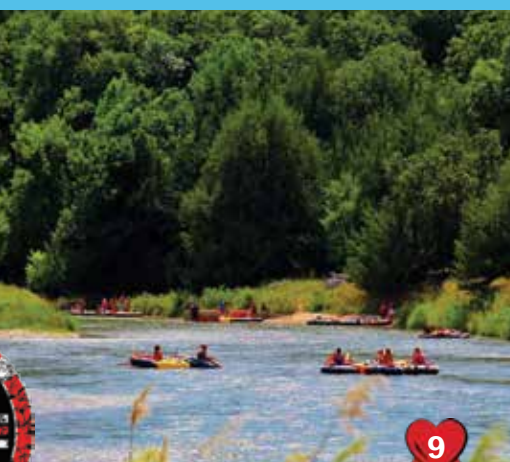
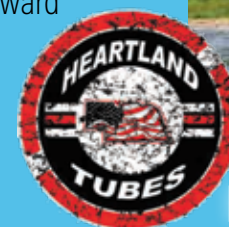
ONE OF A KIND ADVENTURE!

Kick back on a tube and experience the award winning scenic Niobrara River!

New!
Autumn
Trips!

Ask about our guided tours
& MOONLIGHT TRIPS!

702 East C Street
Valentine NE 402-389-1964



HeartlandTubes.com

Coupon: \$5.00 off cooler tube with tube rental

9
STAMP
HERE



Sod House



Visitor Center



Cottonwood Lake & Recreation Area



In 1985, the Nebraska Game & Parks Foundation accepted the gift of the 7,202-acre Bar 99 Ranch from the estate of former U.S. Senator Eve Bowring.

She stipulated that the land was to remain a working ranch, maintaining the ranch's prize herd of Herefords.

Cottonwood Lake campground is located nearby and offers many camping amenities along with power boating, fishing, bird watching and picnicking. Its remote location makes it an excellent place to see the stars and get away from it all.



Passport Stop #24

The Visitor Center contain displays devoted to the extraordinary lives and careers of Arthur and Eve Bowring, as well as the history and geology of the Sandhills and the Nebraska cattle ranching business.

Located near Merriman, NE - 1.5 miles North on Hwy 61

• Working Cattle Ranch • Museum • Sod House • Picnics • Tours

www.outdoornebraska.gov/bowringranch

9:00 a.m.-5:00 p.m Memorial Day - Labor Day
(closed dates subject to change) see website before traveling

(308)-684-3428

Note: A Nebraska State Park Vehicle Entry Permit is required and available on site.



January

1/1 **HAPPY NEW YEAR!**

1/27-28 CORK THORNTON MEMORIAL
ICE FISHING TOURNAMENT

June

TBA VALENTINE CLASSIC CAR CRUISE
NIGHT

6/3 SANDHILLS MARATHON

6/3-4 NIOBRARA RIVER FESTIVAL

6/10 ANDREW CLAYMON
ADULT/YOUTH FISHING TOURNAMENT

6/17 SOD HOUSE SATURDAY NIGHT
BBQ & DANCE - MERRIMAN

6/18 **FATHER'S DAY**

6/23-24 VALENTINE ALUMNI

October

TBA 31st ANNUAL OLD WEST DAYS

10/7 PUMPKIN PATCH VENDOR CRAFT FAIR

TBA MOONLIGHT MADNESS
DOWNTOWN VALENTINE

10/31 **HAPPY HALLOWEEN!**

February

2/11 HEART CITY BULL BASH

2/12 VALENTINE HS CORONATION

2/14 **VALENTINE'S DAY**
VALENTINE HEART DROP & CHILI COOK
OFF

July

7/4 FOURTH OF JULY CELEBRATION &
DEMO DERBY

7/15 CITY-WIDE GARAGE SALE

7/16-22 NE STAR PARTY @ MERRITT
RESERVOIR

7/29 CHAMBER GOLF TOURNAMENT

November

11/11 **VETERAN'S DAY**

11/19 HOLIDAY PREVIEW

11/23 **HAPPY THANKSGIVING!**

11/25 SHOP SMALL SATURDAY & HOLIDAY
PARADE OF LIGHTS

March

3/12 DAYLIGHT SAVINGS
TIME BEGINS

3/17 **ST. PATRICK'S DAY**

August

8/10-13 CHERRY COUNTY
FAIR & RODEO

8/5 CRAZY DAYS
VALENTINE

8/26 OLD SETTLERS
REUNION RODEO SPARKS

December

12/3 WINTERFEST CRAFT & GIFT
SHOW & BAKE SALE

12/9 CHRISTMAS AT THE BOWRING
RANCH MERRIMAN

12/25 **MERRY CHRISTMAS**

April

4/9 **HAPPY EASTER!**

4/22 1884 DAY

**HAPPY 139th BIRTHDAY,
VALENTINE!**

May

5/1 FISHING DERBY

TBA JUNIOR HIGH RODEO

5/14 **MOTHER'S DAY**

5/27 CIRCLE C DAY - CODY

TBA HIGH SCHOOL RODEO

September

9/5 **LABOR DAY!**

9/9 CHADUZA COOK OFF

TBA SANDHILLS CATFISH CLASSIC

9/15-17 SPARKS & SPURS COWBOY FAST DRAW
"LAST CHANCE SHOOT"
NE STATE AND GREAT PLAINS TERRITORIAL SHOOT

9/16 WILD WEST DAYS - KILGORE
(DATE MAY VARY)

TBA BISON ROUND-UP NWR

NEWS & EVENTS

See our website for updates and changes in schedule.
All things are subject to..... change....

www.VisitValentine.org

**Cherry County Tourism
& Valentine Visitor Center**
239 S. Main St / PO Box 687
Valentine, NE 69201

Phone: 402-376-2969
www.VisitValentine.org



DISCOVER A NEW LEVEL OF TASTE.



100 MAIN ST. | KILGORE, NE

P: (402) 966-3881
FACEBOOK: BORDERTOWN STEAKHOUSE & SALOON

Open 7 days a Week
10 am - 11 pm Mon-Thurs / 10 am - 2 am Fri-Sat / 11 am - 8 pm Sunday